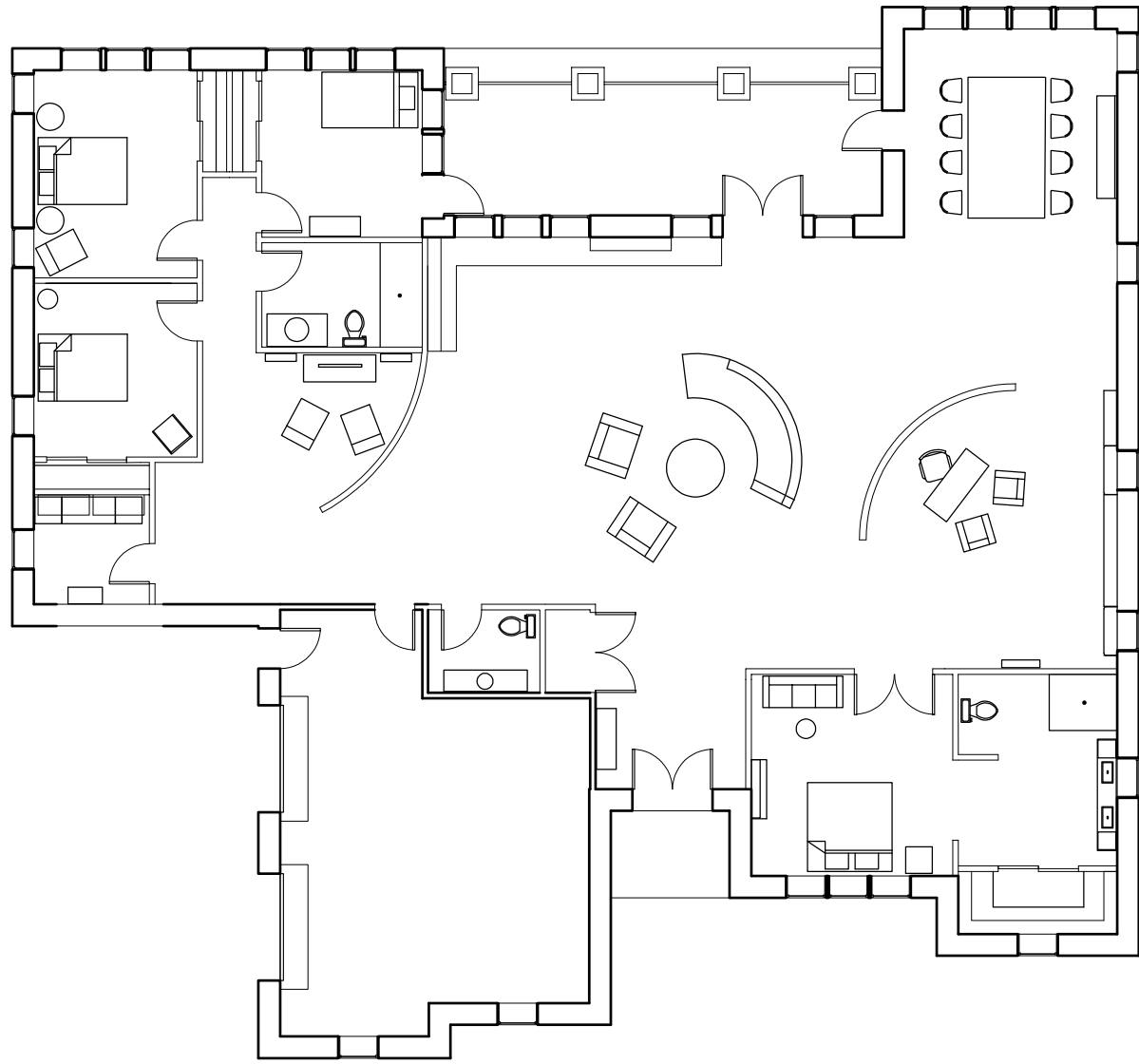
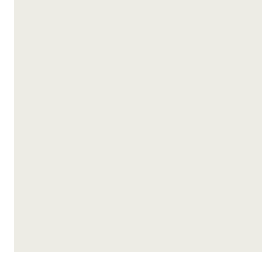


DHM 2103 | PROJECT 1 | STUDENT WORK | OLDER ADULT HOUSING

FLOOR PLAN



DOOR AND WINDOW FINISH



WALL COLOR



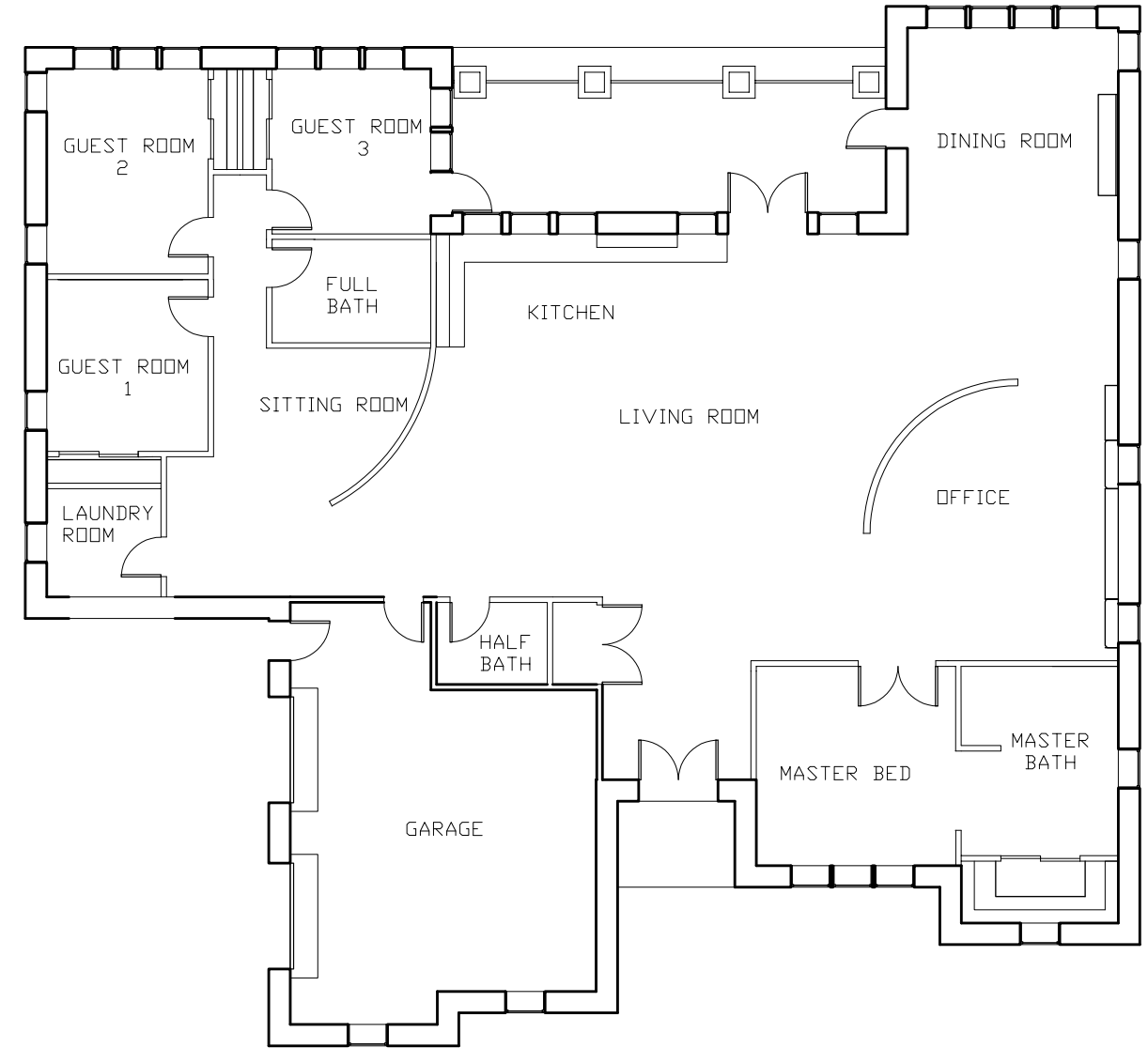
FLOORING



WOOD PANELING



FLOORING



SMITH HOUSE PLAN

SCALE 1/8" = 1'-0"



SMITH HOUSE FURNIATURE PLAN

SCALE 1/8" = 1'-0"



MASTER BEDROOM



A PEACEFUL RETREAT
DESIGNED FOR RELAXATION
AND COMFORT AFTER A LONG
DAY OF SKIING AND HIKING. AN
OPEN CONCEPT ALLOWS FOR A
SEAMLESS TRANSITION INTO
THE EN SUITE.



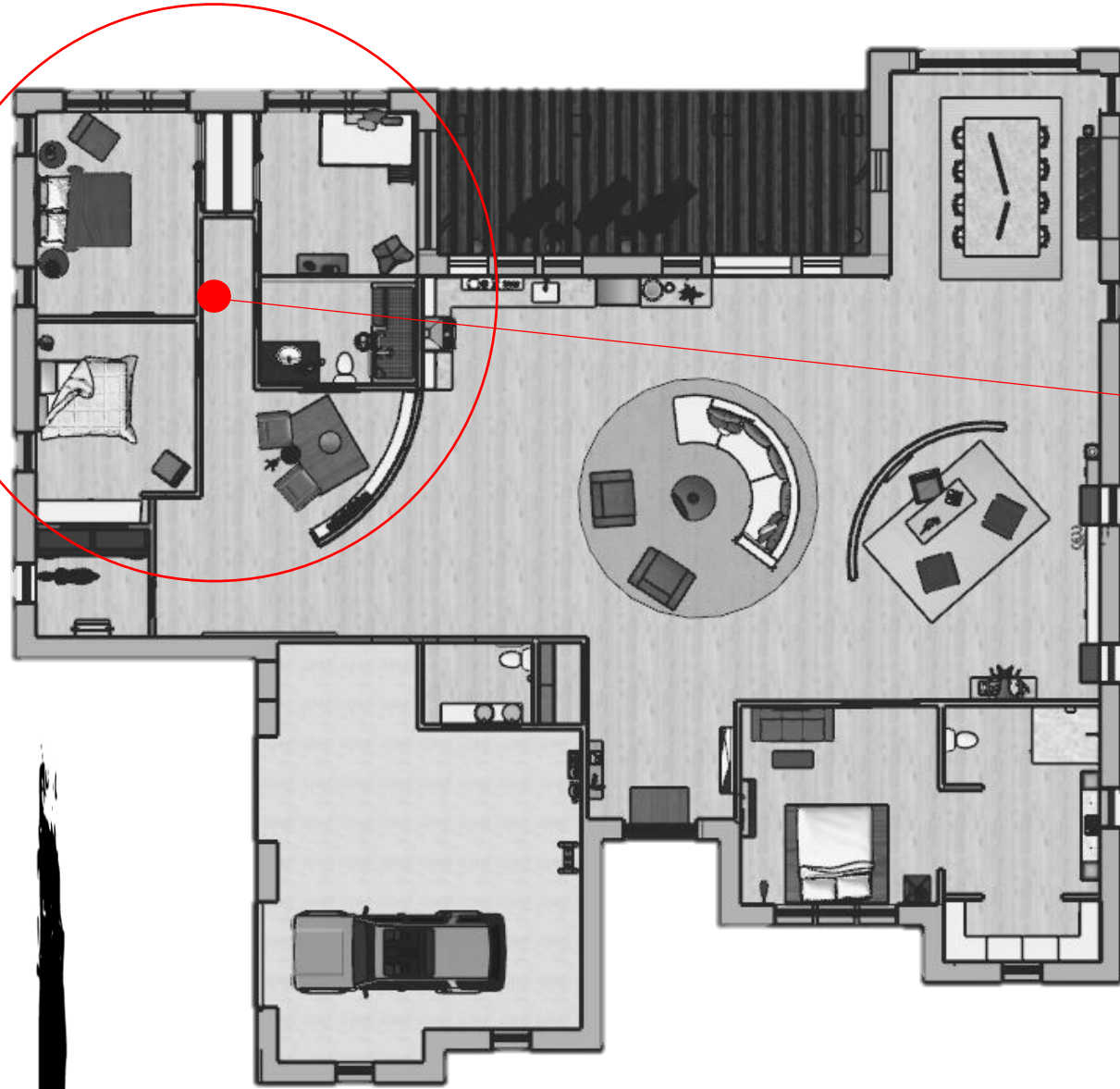
KITCHEN

A BRIGHT SPACE FLOODED WITH NATURAL LIGHT. DESIGNED FOR ENTERTAINING AND EASY USE FOR CLIENTS WITH ARTHRITIS. THE LOWER CABINETS ARE ALL FACED WITH SLIDING DOORS AND THE UPPER CABINETS HAVE A "PUSH-TO-OPEN" MECHANISM.



3 GUEST ROOMS

EACH ROOM IS DESIGNED TO HAVE ENOUGH SPACE FOR A WHEEL CHAIR TO COMFORTABLY WALK THROUGH. ROOM 1 AND 2 ARE DEDICATED TO THE TWO GRANDCHILDREN THAT LIVE WITH THEM OVER THE SUMMER, DESIGNED FOR A MORE PERSONAL AND COMFORTABLE SPACE FOR THEM. THE SECLUDED ROOMS ADDS PRIVACY AND COMFORT FOR ANY GUEST THAT IS STAYING.



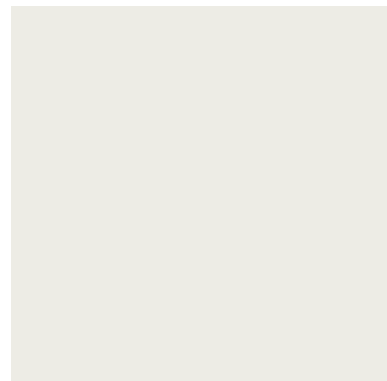
GUEST ROOM 1



GUEST ROOM 3



FLOORING



WALL COLOR



GUEST ROOM 2

FAMILY ROOM

AN OPEN, INVITING PLACE FOR FRIENDS AND FAMILY TO GATHER AROUND THE FIRE. OPEN TO THE KITCHEN FOR EASY ACCESS AND COMMUNICATION. THERE ARE NO RUGS OR SHARP CORNERS IN ORDER TO BE WHEELCHAIR FRIENDLY.

